

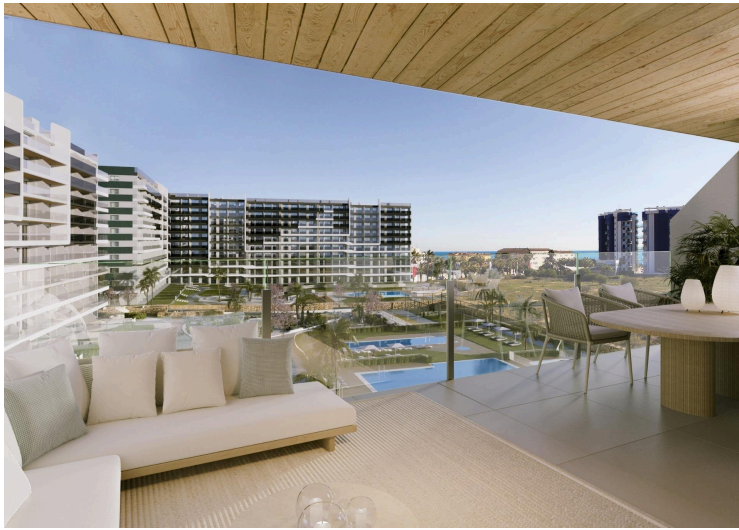
#8605

New Build Apartments in Punta Prima Just 250 Metres from the Sea

📍 Punta Prima, Torrevieja, Alicante

€314,000





Overview

Specifications

Bedrooms

 2

Bathrooms

 2

Covered

 71 m²

Type

Apartment

Status

Key ready

Energy efficiency rating

 B

Description

New Build Apartments in Punta Prima Just 250 Metres from the Sea

Exclusive residential complex with premium communal areas on the Costa Blanca

We present a modern new-build residential complex comprising 250 apartments in Punta Prima, one of the most sought-after areas of Torrevieja. Located just 250 metres from the sea, this project offers a unique opportunity to live close to the beach with all the amenities of a private resort.

2 and 3-bedroom homes with large terraces

The apartments are available in 2 or 3 bedroom configurations with 2 bathrooms, all with an open-plan kitchen integrated into the living room, maximising the feeling of space and natural light. The ground floor properties have private gardens, the middle floors offer large terraces, and the penthouses have solariums to enjoy the sun all year round.

Each unit includes a parking space and storage room, ensuring convenience and additional storage space.

Communal areas for the whole family

The residential complex has been designed to offer an exceptional quality of life. Its communal areas include three swimming pools (one of which is heated), a gym with a jacuzzi, a paddle tennis court, a petanque court and landscaped gardens. The little ones have their own children's pool and a play area designed for their safe entertainment.

High-quality finishes and energy efficiency

PVC exterior carpentry with thermal break

Double glazing and motorised blinds in bedrooms

Fitted kitchen with appliances included

Bathrooms equipped with shower screen, cabinet, mirror and underfloor heating

Air conditioning system using aerothermal heat pump

Security entrance door

Bicycle parking

Floor plans

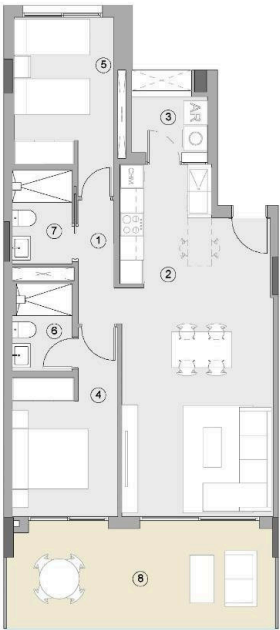
BLUE / AZUL / NIEBIESKI

VIVIENDA TIPO 1

/ HOUSE TYPE

ESC 1-3-4-6-7
PLANTA 1-8

STAIR 1-3-4-6-7
FLOOR 1-8



SUPERFICIES ÚTILES / USABLE AREA

SUPERFICIES ÚTILES INTERIORES / USABLE INTERIOR AREA	
1 PASO / HALLWAY	2.93 m²
2 ESTAR-COM- COCINA / KITCHEN-LIVING	31.53 m²
3 TENDEDERO (100%) / UTILITY ROOM	2.66 m²
4 DORMITORIO 01 / BEDROOM 01	10.47 m²
5 DORMITORIO 02 / BEDROOM 02	9.92 m²
6 BAÑO 01 / BATHROOM 01	3.22 m²
7 BAÑO 02 / BATHROOM 02	3.53 m²
	64.26 m²

SUPERFICIES ÚTILES EXTERIORES / USABLE EXTERIOR AREA	
8 TERRAZA 01 (100%) / TERRACE 01	16.37 m²
	16.37 m²

SUP. ÚTIL TOTAL / TOTAL USABLE AREA	80.63 m²
-------------------------------------	----------

SUPERFICIES CONSTRUIDAS / BUILT AREA

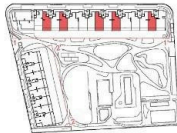
SUP. CONST. INTERIOR / INTERIOR BUILT AREA	71.59 m²
SUP. CONST. EXT (50%) / EXT. BUILT AREA	9.96 m²
SUP. CONST. Z/C / BUILT AREA SHARED AREAS	10.17 m²
SUP. CONS. TOTAL / TOTAL BUILT AREA	91.71 m²



ALZADO 1-1'



ALZADO 2-2'



mayo 2025



Las superficies indicadas lo son con carácter meramente informativo, no contractual, y pueden sufrir ligeras variaciones por necesidades técnicas del proceso de construcción.
The indicated areas are for information purposes only, not contractual, and may vary slightly by technical requirements of the construction process.

Additional information

Facilities

Elevator	Gated complex	Gym
Parking, Uncovered	Pool, Private	

Features

Jacuzzi

Distances

Sea
 250 m