

#8583

New Build Villas with Private Pool in Oasis de la Marina, Costa Blanca

📍 San Fulgencio, Alicante





€392,000





Overview

Specifications

Bedrooms		Bathrooms		Covered		
 3		 2		 99 m ²		
Type	Villa					
Plot	241 m ²					
Status						
Energy efficiency rating					Key ready	
					 A	

Description

New Build Villas with Private Pool in Oasis de la Marina, Costa Blanca

Modern homes in a quiet location near the beach

Discover this exclusive development of 15 detached and semi-detached new-build villas, located in the Oasis de La Marina residential area in the municipality of San Fulgencio. These elegant, contemporary-designed homes are built on one floor and are just 4.5 km from the spectacular beaches of the Costa Blanca. An ideal setting for both permanent living and holiday getaways, in a quiet but well-connected area.

Functional layout and design for maximum comfort

Each villa has a practical and bright layout, designed for enjoying the Mediterranean lifestyle:

3 bedrooms with fitted wardrobes

2 full bathrooms with furniture and glass screens

Fully equipped open-plan kitchen with extractor hood and osmosis system

Spacious living-dining room with direct access to the garden

Private solarium

Private garden with swimming pool and solarium area

Parking space on the plot

Complete equipment and energy efficiency

These villas are designed with high-quality materials and energy-efficient solutions:

Hot and cold air conditioning system

Installation of photovoltaic solar panels

Interior and exterior LED lighting

Electric aluminium blinds

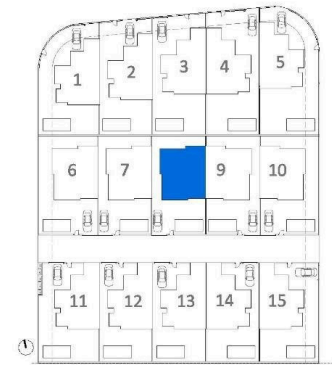
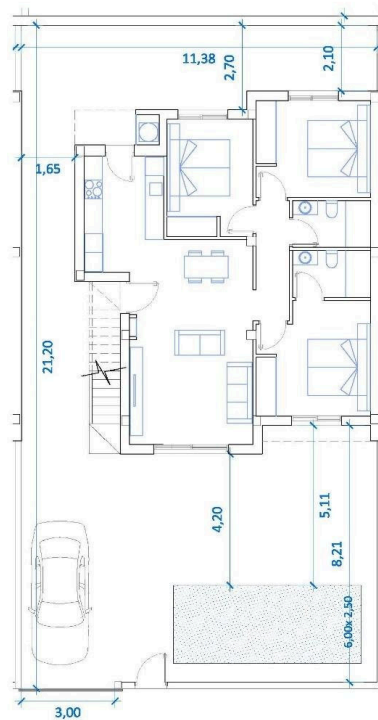
Private pool in each property

Private parking within the plot

Natural surroundings and nearby amenities

Oasis de La Marina is a quiet residential area surrounded by nature, between the towns of San Fulgencio, La Marina

Floor plans

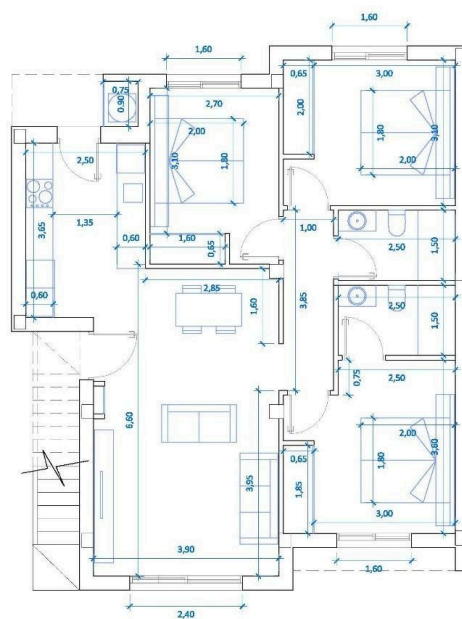
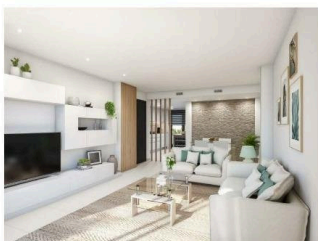


Superfície parcela 246,17m2

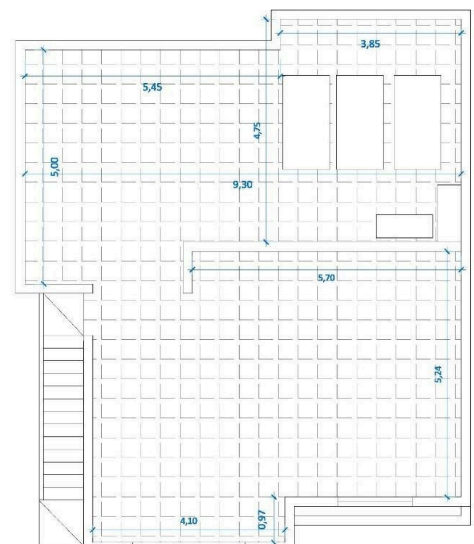
PROMOCIÓN 15 VIVIENDAS CON PISCINA

Las medidas e imágenes son orientativos y pueden estar sujetos a cambios y/o modificaciones.

PARCELA 8



PLANTA MODELO A



SOLARIUM MODELO A

Superfície construída 99,70 m²

PROMOCIÓN 15 VIVIENDAS CON PISCINA

Las medidas e imágenes son orientativos y pueden estar sujetos a cambios y/o modificaciones.

VILLA 8

Additional information

Facilities

Aircondition, Split system

Gated complex

Parking, Uncovered

Pool, Private

Features

Garden

Distances

Sea



4.5 km