

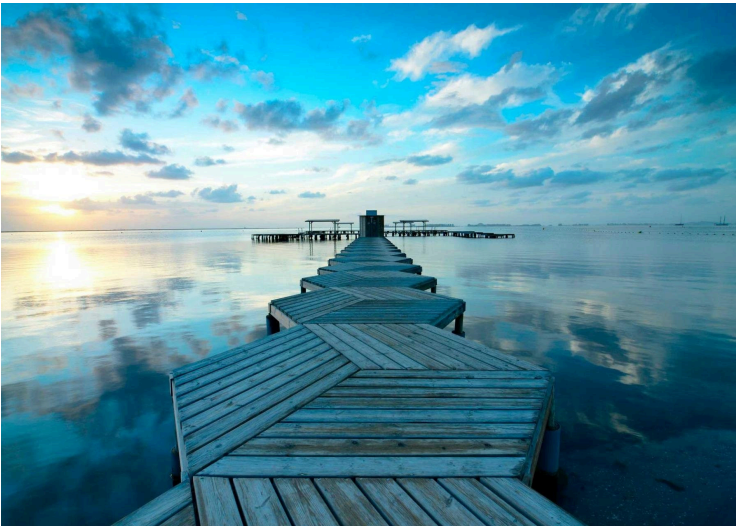
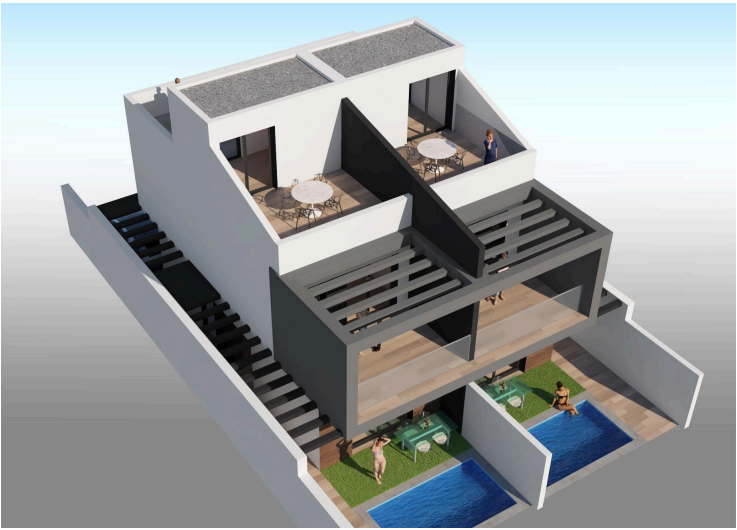
#8525

Modern Semi-Detached Villas with Private Pool Near the Sea in Santiago de la Ribera

📍 San Javier, Murcia





€390,000





Overview

Specifications

Bedrooms		Bathrooms		Covered	
 3		 3		 107 m ²	
Type			Status		
Plot			Energy efficiency rating		
Villa			Key ready		
54 m ²			 B		

Description

Modern Semi-Detached Villas with Private Pool Near the Sea in Santiago de la Ribera

Exclusive New Construction Just 1 km from the Beach

Discover this limited-edition development of only two semi-detached villas located in Santiago de la Ribera, a charming coastal town on the Murcian coast, known for its relaxed lifestyle, clean beaches, and excellent year-round climate. These new homes are situated just 1 km from the shores of the Mar Menor, offering the perfect combination of privacy, comfort, and proximity to essential services and leisure options.

Contemporary Design with Functional Layout

Each villa is thoughtfully distributed across two floors plus a rooftop solarium, providing ample space for modern living. The properties feature:

- 3 spacious bedrooms, including one on the ground floor
- 3 fully fitted bathrooms, two of which are en suite
- A private garden and swimming pool
- Terrace on the first floor and a rooftop solarium ideal for sunbathing or entertaining
- Private parking within the plot, with access from the rear street and a separate pedestrian entrance at the front

This layout ensures optimal privacy and ease of access while maximizing outdoor living space.

High-Quality Finishes and Features

Built with attention to detail and modern standards, the homes include:

- Aluminium exterior carpentry with thermal break and double-glazed windows
- Complete ducted air conditioning installation
- Private pool included with each villa
- Secure parking space within the plot

These homes are designed for year-round comfort, whether as a primary residence, a second home, or a vacation rental investment.

Floor plans

VIVIENDA A

SUP. CONSTRUIDA VIVIENDA.....	96,00 m ²
SUP. CONSTRUIDA TORREÓN.....	11,60 m ²
SUP. UTIL INTERIOR.....	81,75 m ²
SUP. UTIL EXTERIOR.....	103,15 m ²
jardines.....	54,15 m ²
terrace.....	11,90 m ²
solarium.....	29,00 m ²
piscina.....	7,90 m ²

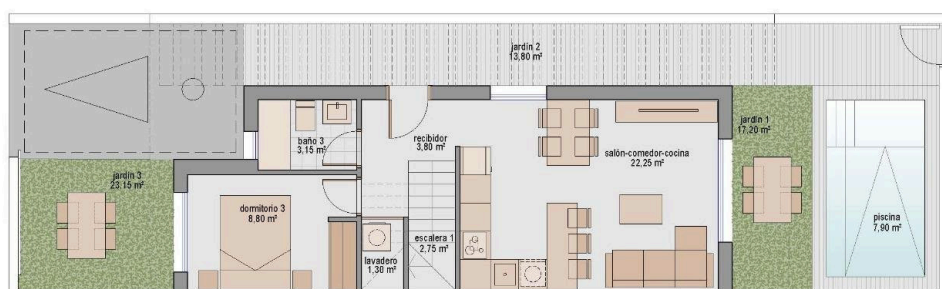


PLANO COMERCIAL PROVISIONAL

Plano sujeto a posibles modificaciones por razones o exigencias de índole técnica o jurídica.

ESCALA GRÁFICA

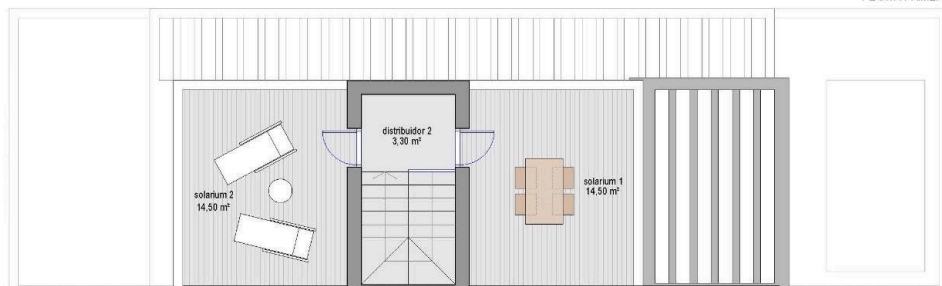
0 1 m 5 m



PLANTA BAJA



PLANTA PRIMERA



PLANTA TORREÓN

Additional information


Facilities

Aircondition, Split system	Gated complex	Parking, Uncovered
Pool, Private		

Features

Garden	Near bus route
--------	----------------

Distances

Sea
 0 m