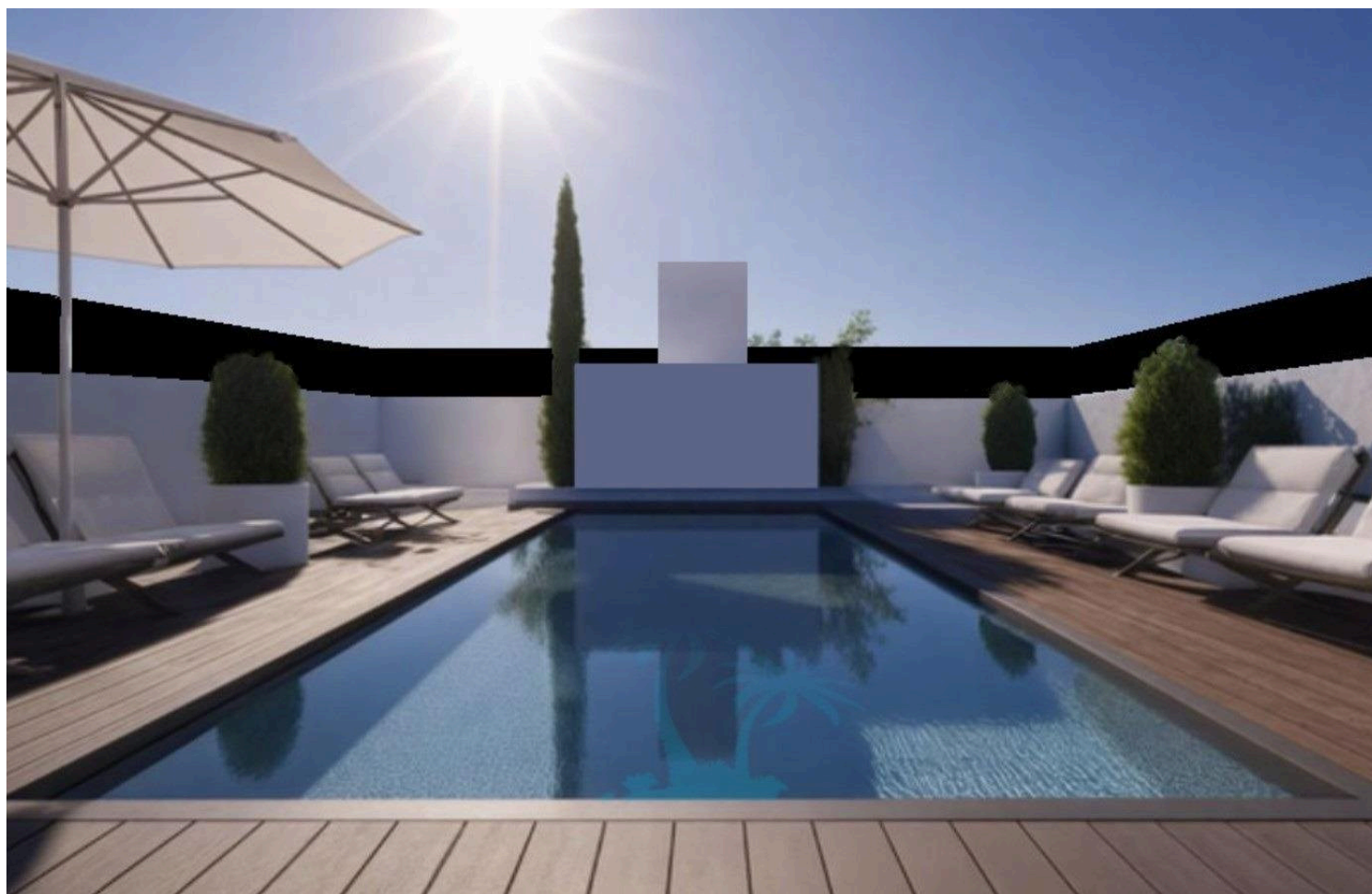


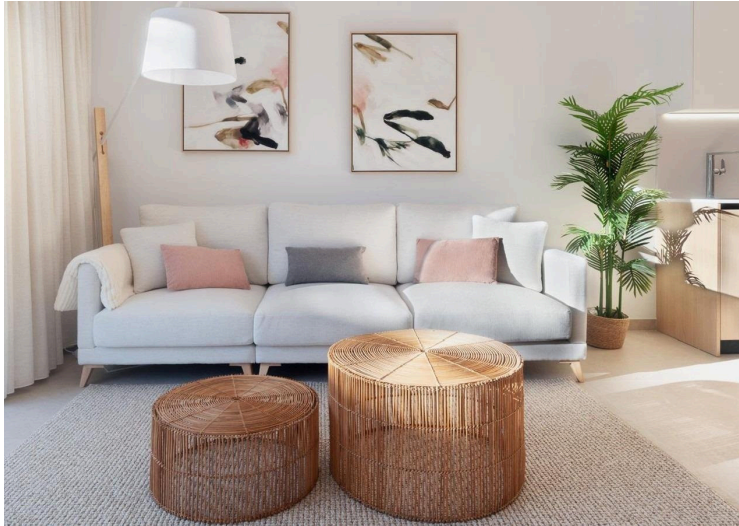
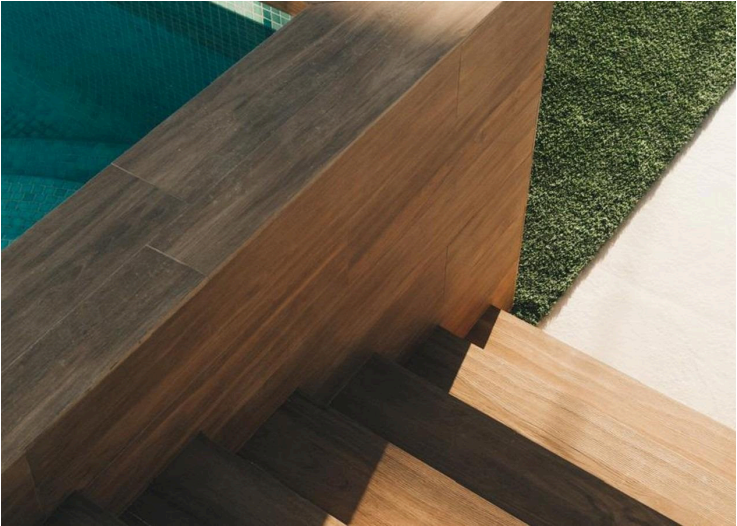
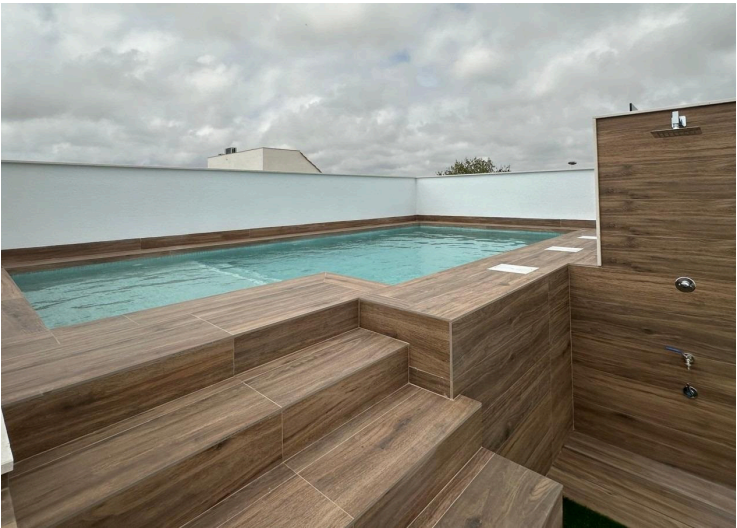
#8518

New Build Bungalows in San Pedro del Pinatar – Luxury and Nature by the Sea

📍 San Pedro del Pinatar, Murcia

€304,000





Overview

Specifications

Bedrooms

 3

Bathrooms

 2

Covered

 82 m²

Type

Bungalow

Status

Key ready

Energy efficiency rating

 **B**

Description

New Build Bungalows in San Pedro del Pinatar – Luxury and Nature by the Sea

Prime Location Near Beaches and Nature Reserve

Discover an exclusive residential complex of new build bungalows located in one of the most privileged areas of San Pedro del Pinatar, Murcia. Just 1.8 km from the beaches of the Mediterranean Sea and only 500 metres from the protected Salinas y Arenales Regional Park, this development offers a unique lifestyle surrounded by nature, tranquillity and all essential services.

The complex sits in a peaceful residential neighborhood facing a large park, with easy walking access to supermarkets, shops, cafés, the town centre, and the local bus station, providing excellent connections to nearby towns such as Torrevieja and Cartagena.

Modern Mediterranean Living – Bungalows with Garden or Solarium

This boutique development offers 2 and 3 bedroom bungalows with two distinct layouts:

Ground floor homes with private gardens

Top floor homes with spacious private solariums

Each property is designed to maximize comfort, natural light, and open spaces, ideal for both permanent living and holiday retreats. All homes include a private parking space and storage room, and enjoy access to a large communal swimming pool and a fully equipped gym.

As an optional upgrade, residents may add a private swimming pool, further enhancing the exclusivity and enjoyment of outdoor living.

High-Quality Features and Customization Options

These new build bungalows are built to the highest standards, offering:

Aluminium windows with thermal break and electric shutters for comfort and energy efficiency

Underfloor heating in bathrooms for year-round warmth

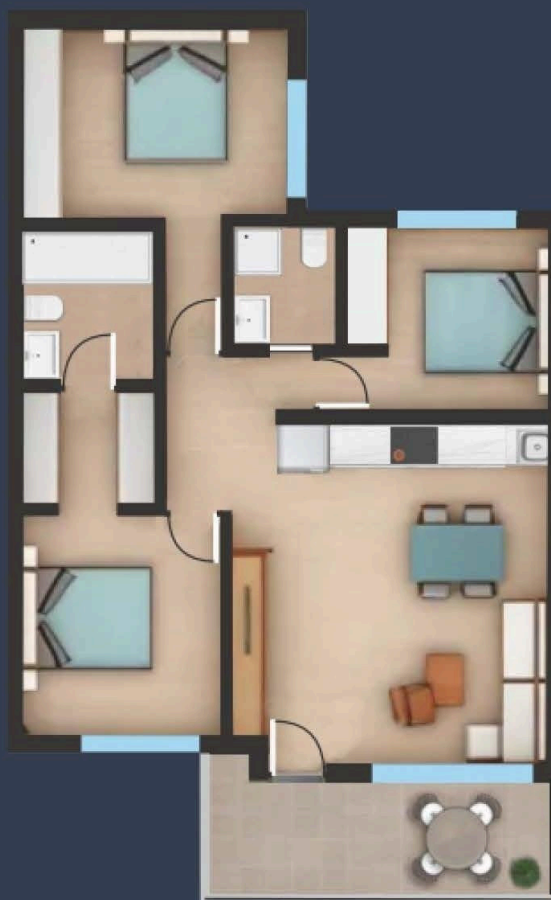
Floor plans

Tipo A

- 3 Dormitorios
- 2 Baños
- Garaje
- Trastero

Type A

- 3 Bedrooms
- 2 Bathrooms
- Garage
- Storage room



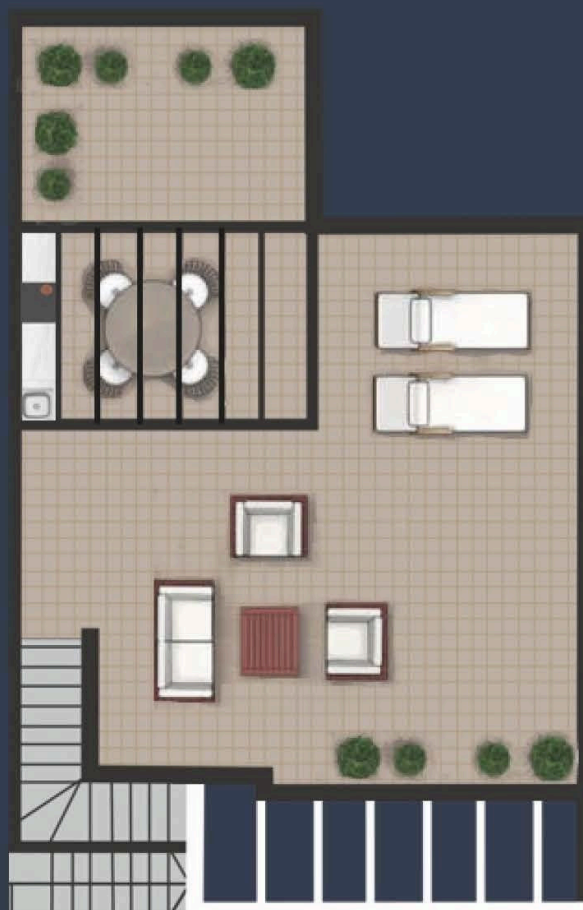
Contacto
Contact

Tipo A

- 3 Dormitorios
- 2 Baños
- Garaje
- Trastero

Type A

- 3 Bedrooms
- 2 Bathrooms
- Garage
- Storage room



Contacto
Contact

Additional information

Facilities

Aircondition, Provision

Gated complex

Gym

Parking, Uncovered

Pool, Private

Features

Near bus route

Distances

Sea



2 km