

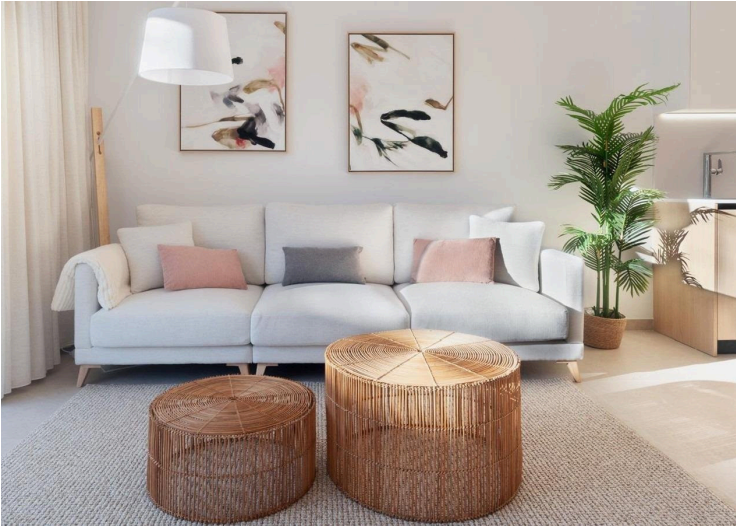
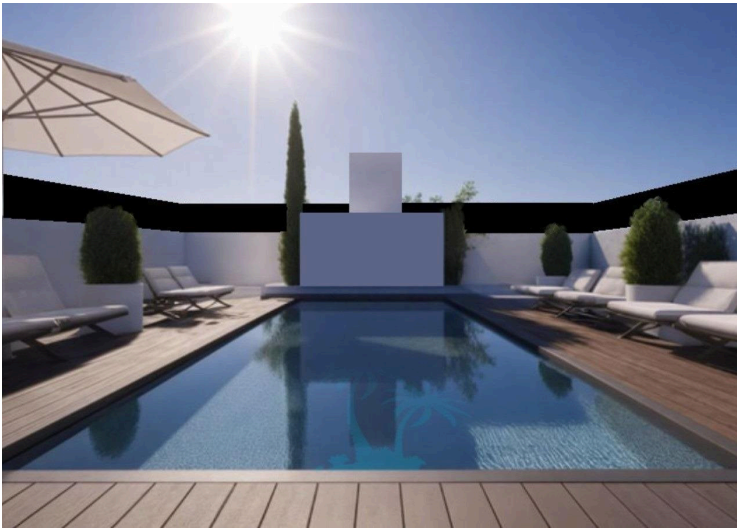
#8516

New Build Bungalows in San Pedro del Pinatar – Luxury and Nature by the Sea

📍 San Pedro del Pinatar, Murcia





€298,000





Overview

Specifications

Bedrooms	Bathrooms	Covered
 3	 2	 83 m ²
Plot	21 m ²	Energy efficiency rating
Status	Key ready	 B

Description

New Build Bungalows in San Pedro del Pinatar – Luxury and Nature by the SeaPrime Location Near Beaches and Nature ReserveDiscover an exclusive residential complex of new build bungalows located in one of the most privileged areas of San Pedro del Pinatar, Murcia. Just 1.8 km from the beaches of the Mediterranean Sea and only 500 metres from the protected Salinas y Arenales Regional Park, this development offers a unique lifestyle surrounded by nature, tranquillity and all essential services.The complex sits in a peaceful residential neighborhood facing a large park, with easy walking access to supermarkets, shops, cafés, the town centre, and the local bus station, providing excellent connections to nearby towns such as Torrevieja and Cartagena.Modern Mediterranean Living – Bungalows with Garden or SolariumThis boutique development offers 2 and 3 bedroom bungalows with two distinct layouts:Ground floor homes with private gardensTop floor homes with spacious private solariumsEach property is designed to maximize comfort, natural light, and open spaces, ideal for both permanent living and holiday retreats. All homes include a private parking space and storage room, and enjoy access to a large communal swimming pool and a fully equipped gym.As an optional upgrade, residents may add a private swimming pool, further enhancing the exclusivity and enjoyment of outdoor living.High-Quality Features and Customization OptionsThese new build bungalows are built to the highest standards, offering:Aluminium windows with thermal break and electric shutters for comfort and energy efficiencyUnderfloor heating in bathrooms for year-round warmthPre-installation of ducted air conditioning throughout the homeModern kitchens with high-end finishes and options to personalise colours and materialsSpacious, light-filled interiors with functional layouts and optimal orientationA Town That Offers MoreSan Pedro del Pinatar is a coastal gem on the Costa Cálida, nestled between the Mar Menor and the Mediterranean Sea. It is known for its unique salt flats, sandy beaches, and traditional fishing heritage. The area also features:Therapeutic mud baths on the shoreline of the Mar MenorFamily-friendly beaches with calm, shallow watersNatural walking trails for birdwatching and outdoor activitiesVibrant local markets, cultural events, and excellent restaurantsProximity to airports: Murcia International Airport at 35 km and Alicante Airport at 75 kmGolf courses within 10 to 15 km, including Lo Romero Golf and Roda Golf ResortShopping centres like Dos Mares just 3 km awaySecure Your Mediterranean Dream TodayThese new build bungalows offer the perfect blend of modern design, exceptional location, and quality finishes. Whether you are looking for a permanent home, holiday property or investment opportunity, this is your chance to enjoy the Mediterranean lifestyle in San Pedro del Pinatar. Contact us now to request more information or arrange a viewing.

Floor plans

Tipo A

- 3 Dormitorios
- 2 Baños
- Garaje
- Trastero

Type A

- 3 Bedrooms
- 2 Bathrooms
- Garage
- Storage room

Contacio
Contact



PLANO PLANTA BAJA / GROUND FLOOR PLAN



Tipo A

1

Tipo A

2

Tipo B

3

Tipo B

4

Tipo B

5

Additional information


Facilities

Aircondition, Provision	Gated complex	Gym
Parking, Uncovered	Pool, Communal	

Features

Garden	Near bus route
--------	----------------

Distances

Sea
 2 km