

#8357

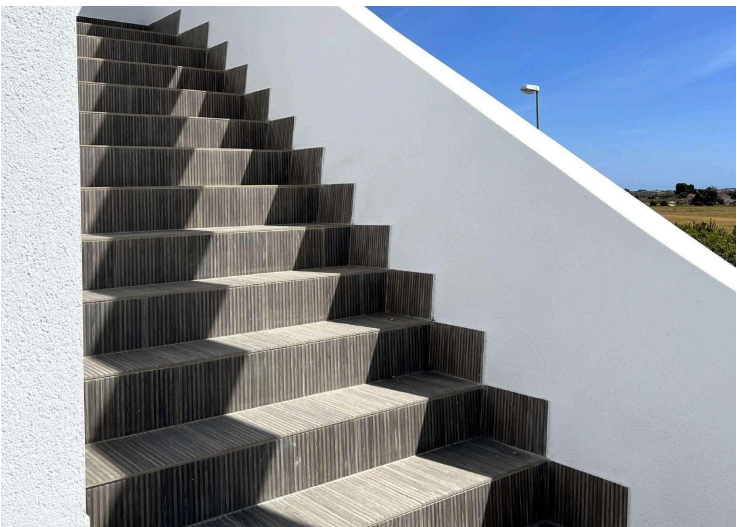
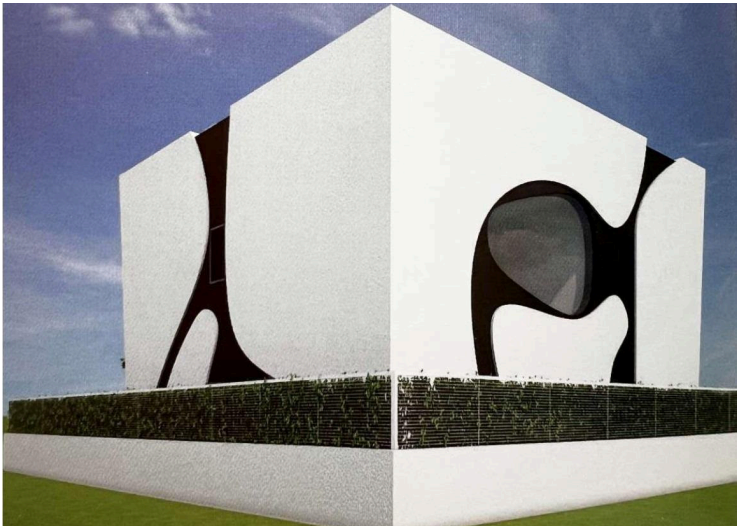
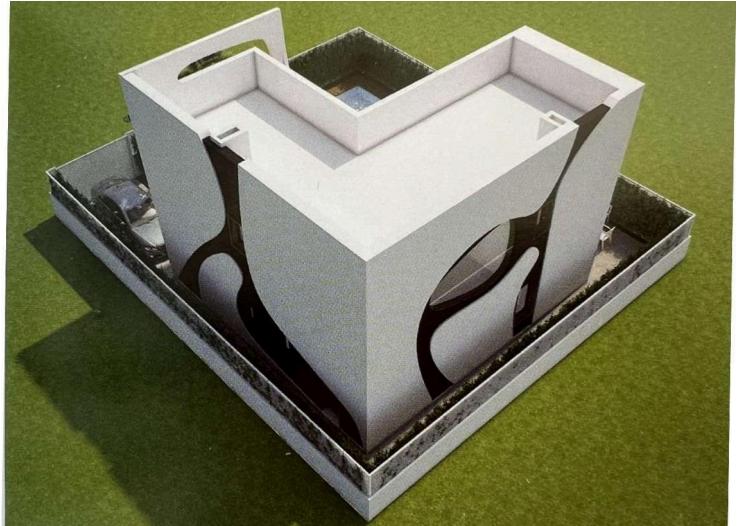
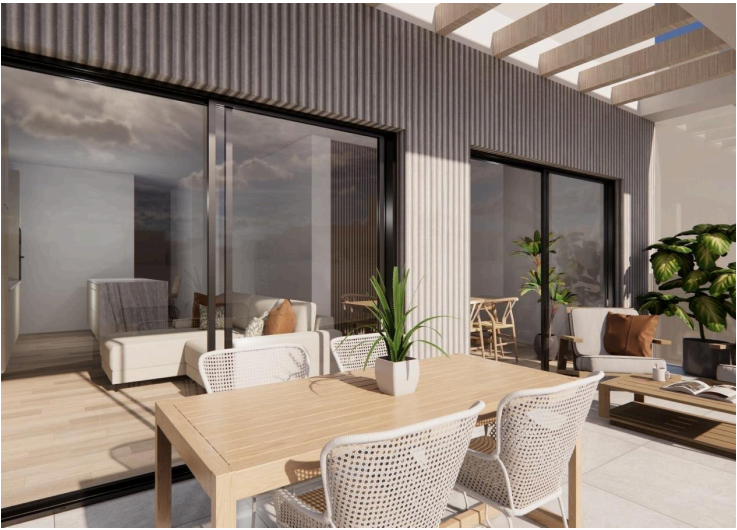
# Exclusive New Build Villas in Ciudad Quesada - Design, Comfort and Privileged Location

 Rojasles, Alicante

€649,000













# Overview

## Specifications

Bedrooms		Bathrooms		Covered	
 3		 3		 115 m <sup>2</sup>	
Type			Status		
Plot			Energy efficiency rating		
Villa			Key ready		
278 m <sup>2</sup>			 B		

## Description

Exclusive New Build Villas in Ciudad Quesada - Design, Comfort and Privileged Location

High Quality Homes in a Privileged Setting

Discover these 7 stunning detached villas in Ciudad Quesada - Rojas, one of the most sought after areas of the Costa Blanca South. With a modern and elegant design, these properties are designed for those looking for a luxury home, whether as a permanent residence or a holiday home.

Located in a privileged natural environment, close to the Salt Lakes of La Mata and Torrevieja, these villas enjoy a unique microclimate that guarantees an exceptional quality of life all year round.

Different Models to Choose From

The development offers two types of villas, adapted to different needs and lifestyles:

Two-storey villas with 3 double bedrooms and 3 full bathrooms.

Single-storey villas with 3 bedrooms and 2 bathrooms.

All the properties have:

Private rooftop solarium, ideal for enjoying the sun and panoramic views.

Private swimming pool and landscaped garden, perfect for relaxing and entertaining.

Private parking space.

In addition, a fully equipped show home is available, where you can appreciate the quality of the materials and luxury finishes.

High End Equipment and Finishes

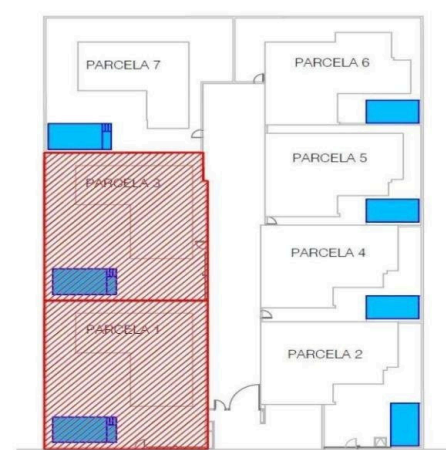
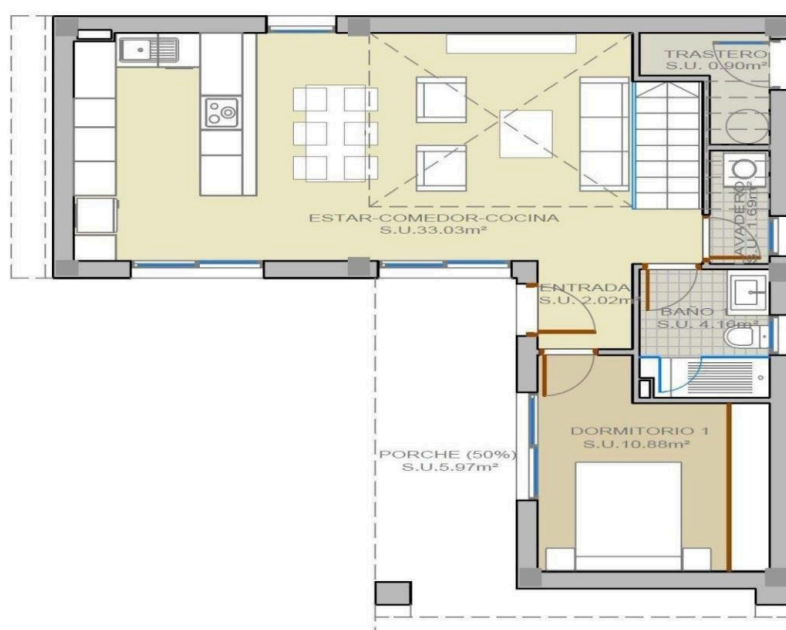
These villas have been designed to ensure maximum comfort and energy efficiency:

Fully equipped kitchen with appliances included.

Pre-installation of ducted air conditioning.

Large open spaces and large windows, which provide excellent natural light.

# Floor plans



## SUPERFICIE CONSTRUIDA:

PLANTA BAJA:	
VIV. CERRADA:	69,95 m <sup>2</sup>
PORCHE (50%):	5,97 m <sup>2</sup>
	75,92 m <sup>2</sup>
PLANTA PISO:	
VIV. CERRADA:	50,93 m <sup>2</sup>
	50,93 m <sup>2</sup>
PLANTA CUBIERTA:	
SOLARIUM (0%):	60,50 m <sup>2</sup>
TOTAL SUP. CONSTRUIDA:	126,85 m <sup>2</sup>

# Additional information

## Facilities

Aircondition, Provision	Gated complex	Parking, Uncovered
Pool, Private		

## Features

Garden	Near bus route
--------	----------------

## Distances

Sea
 5 km