

#8151

New Construction Villas on the Frontline of Lo Romero Golf

📍 Pilar de la Horadada, Alicante





€489,000





Overview

Specifications

Bedrooms		Bathrooms		Covered		
 3		 3		 111 m ²		
Type	Villa					
Plot	280 m ²					
		Status		Key ready		
		Energy efficiency rating		 A		

Description

New Construction Villas on the Frontline of Lo Romero Golf

Luxury Villas in Lo Romero Golf Resort

Discover 7 exclusive new construction villas situated on the frontline of Lo Romero Golf, offering a perfect blend of luxury, comfort, and breathtaking views of the golf course. These residences stand out for their prime location and modern architectural design, ideal for discerning buyers looking for a smart investment and an exceptional quality of life.

Modern Design with Premium Features

Each villa boasts a sophisticated, contemporary style with high-end finishes. The homes include 3 spacious bedrooms, 3 bathrooms, an open-plan kitchen connected to the living room, built-in wardrobes, and private gardens with a swimming pool. Additional features include:

- Reinforced security entrance doors
- Motorized blinds matching the carpentry, with thermal and acoustic insulation
- Double-glazed Climalit windows with anti-breakage safety glass
- Aerothermal water heating system for energy efficiency
- Photovoltaic solar panels for electrical energy production
- Pre-installation of ducted air conditioning
- Carport with a pergola in elegant oxidized brown tones
- Natural stone masonry walls separating the private gardens and the golf course

Prime Location in Pilar de la Horadada

Located in the charming Lo Romero Golf Resort, the villas enjoy a privileged setting in Pilar de la Horadada, a quintessential Spanish town in southern Costa Blanca. The 18-hole golf course is surrounded by beautiful landscapes and lies just a short drive from crystal-clear Mediterranean beaches.

Proximity to Key Points of Interest

Beaches: The pristine beaches of Torre de la Horadada and Mil Palmeras are just 6 km away, offering fine sand scenic promenades.

Floor plans



PLANTA BAJA/GROUND FLOOR

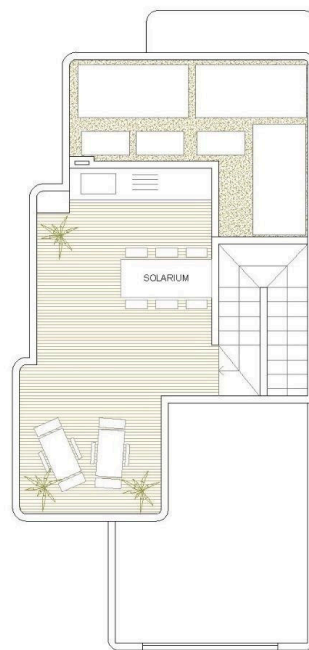
SUPERFICIES ÚTILES / OCCUPIABLE AREA

PLANTA BAJA / GROUND FLOOR	
LIVING ROOM - KITCHEN	36,11 m²
DORMITORIO 1 / BEDROOM 1	11,16 m²
BAÑO 1 / BATHROOM 1	3,73 m²
PASEO 1 / CORRIDOR 1	1,47 m²



PLANTA PRIMERA/FIRST FLOOR

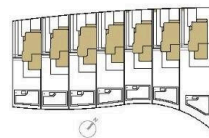
PLANTA PRIMERA / FIRST FLOOR	
DORMITORIO 2 / BEDROOM 2	10,25 m²
BAÑO 2 / BATHROOM 2	4,68 m²
PASEO 2 / CORRIDOR 2	3,15 m²
DORMITORIO 3 / BEDROOM 3	11,23 m²
BAÑO 3 / BATHROOM 3	3,42 m²



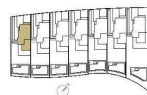
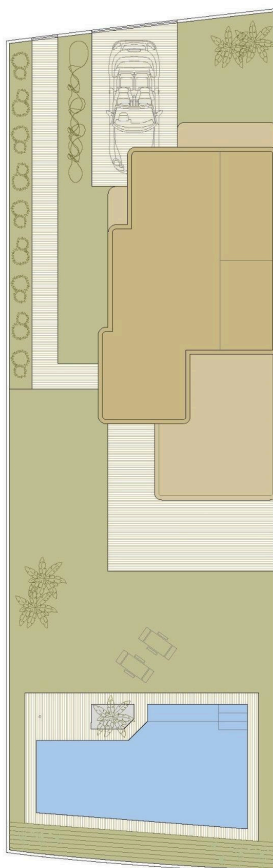
SOLARIUM

VIVIENDA TIPO

TERRAZA / TERRACE	17,22 m²
SOLARIUM	24,00 m²
SUPERFICIES CONST. / BUILT AREA	
SUP. CERRADA / CLOSED AREA	112,00 m²
CLOSED AREA + TERRACE + SOLARIUM	153,22 m²
PARCELA / PLOT	280,06 m²



PLANO SUJETO A MODIFICACIONES DE ÍNDOLE TÉCNICA O JURÍDICA. LAS SUPERFICIES SON APROXIMADAS / PLAN SUBJECT TO POSSIBLE MODIFICATIONS FOR TECHNICAL OR LEGAL REASONS. THE MEASUREMENTS SHOWN ARE APPROXIMATE



VIVIENDA TIPO V.1

SUPERFICIES ÚTILES / OCCUPIABLE AREA

PLANTA BAJA / GROUND FLOOR	
LIVING ROOM - KITCHEN	36,11 m²
DORMITORIO 1 / BEDROOM 1	11,16 m²
BAÑO 1 / BATHROOM 1	3,73 m²
PASEO 1 / CORRIDOR 1	1,47 m²

PLANTA PRIMERA / FIRST FLOOR	
DORMITORIO 2 / BEDROOM 2	10,25 m²
BAÑO 2 / BATHROOM 2	4,68 m²
PASEO 2 / CORRIDOR 2	3,15 m²
DORMITORIO 3 / BEDROOM 3	11,23 m²
BAÑO 3 / BATHROOM 3	3,42 m²

TERRAZA / TERRACE	17,22 m²
SOLARIUM	24,00 m²

SUPERFICIES CONST. / BUILT AREA

SUP. CERRADA / CLOSED AREA	112,00 m²
CLOSED AREA + TERRACE + SOLARIUM	153,22 m²
PARCELA / PLOT	280,06 m²

0 1 5 10

PLANO SUJETO A MODIFICACIONES DE ÍNDOLE TÉCNICA O JURÍDICA. LAS SUPERFICIES SON APROXIMADAS / PLAN SUBJECT TO POSSIBLE MODIFICATIONS FOR TECHNICAL OR LEGAL REASONS. THE MEASUREMENTS SHOWN ARE APPROXIMATE

Additional information


Facilities

Aircondition, Provision	Gated complex	Parking, Uncovered
Pool, Private		

Features

Garden	Golf course
--------	-------------

Distances

Sea
 7 km