

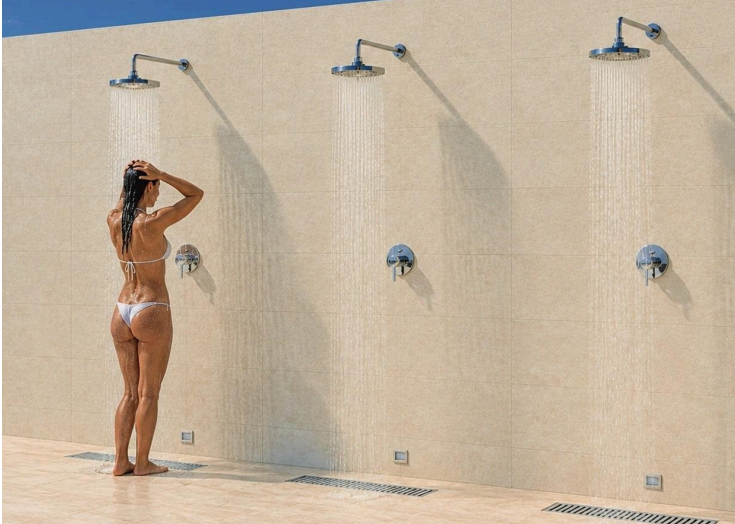
#11222

Luxury New Build Apartments Near Torrevieja Marina and Playa del Cura

 Torrevieja, Alicante

€230,000





Overview

Specifications

Bedrooms



1

Bathrooms



1

Covered



49 m²

Type

Apartment

Uncovered veranda

3 m²

Status

Key ready

Energy efficiency rating



Description

Luxury New Build Apartments Near Torrevieja Marina and Playa del Cura Exclusive Apartments in the Heart of Torrevieja Discover this elegant new residential development of just 23 luxury apartments located in one of the most desirable areas of Torrevieja, only 100 meters from the marina promenade and 400 meters from Playa del Cura. Perfectly positioned in the vibrant city center, this boutique building offers modern Mediterranean living surrounded by restaurants, shops, supermarkets, cafés and all essential daily services within walking distance. Torrevieja is one of the most popular destinations on the Costa Blanca, famous for its year round sunshine, lively atmosphere, beautiful beaches and excellent infrastructure. With an average annual temperature of 20 degrees, the city offers an exceptional quality of life for both permanent residents and holiday homeowners. Modern Apartments with Contemporary Design This exclusive development consists of 23 contemporary apartments distributed over four residential floors above a commercial ground floor. Buyers can choose between stylish 1 and 2 bedroom layouts, carefully designed to maximize natural light, comfort and functionality. The homes feature open plan living and dining areas connected to modern American style kitchens, creating bright and spacious interiors ideal for modern lifestyles. Terraces extend the living spaces outdoors, allowing residents to enjoy the Mediterranean climate throughout the year. The project also includes 5 exclusive penthouses with private solariums and private swimming pools, offering panoramic views and an exceptional outdoor living experience. Premium Features and Communal Areas The building has been designed with high quality materials and modern specifications to ensure comfort, energy efficiency and elegance. Most apartments include a private underground parking space and storage room. Residents can enjoy a beautiful rooftop communal swimming pool with solarium area and sea views, easily accessible by lift. This private rooftop space provides the perfect setting to relax and enjoy the Costa Blanca sunshine. Additional features include: Reinforced security entrance door Bathrooms with furniture, shower screens and underfloor heating Exterior carpentry with thermal break and double glazing Pre installation for ducted air conditioning Modern fitted kitchens and contemporary finishes throughout Prime Location Close to Beaches and Services Torrevieja offers an exceptional coastal lifestyle with sandy beaches, marina facilities, waterfront restaurants and natural surroundings. The famous Natural Park of La Mata and Torrevieja, known for its pink salt lagoons and walking trails, is only a short drive away. Distances to key points of interest: Playa del Cura: 0.4 km Torrevieja Marina: 0.2 km New Port Commercial Area: 0.2 km La Mata Natural Park: 4 km Villamartin Golf: 8 km La Zenia Boulevard Shopping Centre: 10 km Alicante Airport: 45 km Murcia Corvera Airport: 60 km Secure Your New Home on the Costa Blanca This exclusive new development combines luxury, location and lifestyle in the center of Torrevieja. Whether you are looking for a permanent residence, holiday apartment or investment opportunity, these modern homes offer outstanding value in one of the Costa Blanca's most attractive coastal cities. Contact us today for more information or

Floor plans

PLANTA PRIMERA Vivienda N° 1 - 1 Dormitorio

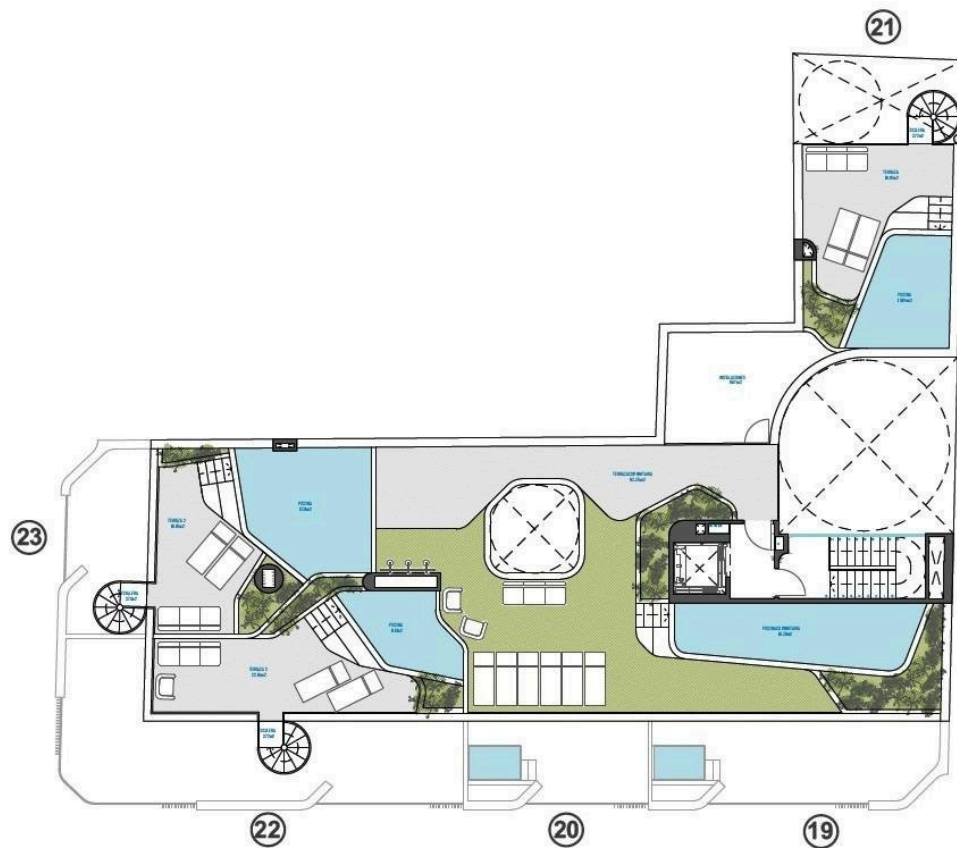
- Salón Comedor Cocina 22,52 m²
- Distribuidor 3,27 m²
- Baño 3,40 m²
- Dormitorio 10,49 m²
- Terraza 3,51 m²

TOTAL ÚTIL
43,19 m²

TOTAL CONSTRUIDA
49,57 m²



VIVIENDA 1 PLANTA 1ª - 1 DORMITORIO



PLANTA SOLÁRIUM

Additional information

Facilities

Aircondition, Provision

Elevator

Gated complex

Pool, Communal

Features

Near bus route

Distances

Sea



400 m