

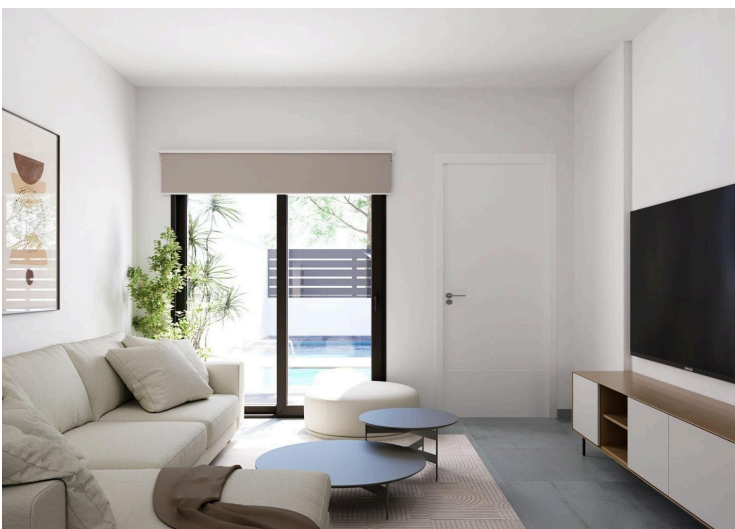
#11004

Modern, newly built semi-detached and terraced homes with private pools at El Alba Resort-Torre Pacheco

📍 Torre Pacheco, Murcia

€259,900





Overview

Specifications

Bedrooms


 2

Bathrooms

 2

Covered

 82 m²

Type	Townhouse	Status	Key ready
Plot	151 m²	Energy efficiency rating	 B
Uncovered veranda	73 m²		

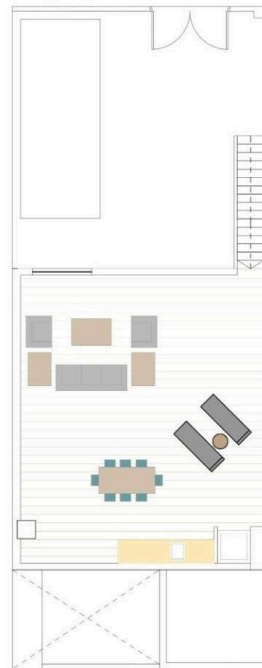
Description

Modern, newly built semi-detached and terraced homes with private pools at El Alba Resort-Torre Pacheco Contemporary homes in a growing Mediterranean holiday community This new development comprises 16 exclusive semi-detached and terraced homes, situated at El Alba Mediterranean Resort in Torre Pacheco. Designed as single-storey homes, these modern properties offer a perfect blend of comfort, functionality and Mediterranean outdoor living. El Alba Resort is an up-and-coming residential area surrounded by open countryside and golf courses, within easy reach of the town of Roldán, where you will find supermarkets, restaurants, banks and everyday amenities. The complex already features a social club with a swimming pool and restaurant, and a retail area is currently under development, adding further convenience and value to the location. Single-storey home with private garden and sun terrace Each property features 2 bedrooms and 2 bathrooms, one of which is en-suite, with an open-plan kitchen connected to a bright living room. The layout is carefully designed to maximise natural light and create a seamless connection between indoor and outdoor spaces. All homes include: Fitted kitchen with appliances Bathrooms with vanity units, mirrors, lighting and shower screens Fitted wardrobes with drawers in the bedrooms Pre-installation for ducted air conditioning Indoor and outdoor LED lighting Three photovoltaic solar panels with a capacity of 1.5 kW per property The outdoor areas are designed to be enjoyed all year round, featuring a private garden with a swimming pool, a terrace and a large private sun deck with a summer kitchen, ideal for al fresco dining and relaxing in the sun. Quality features designed for comfort and efficiency These homes are built with stylish and functional interiors, focused on energy efficiency and modern living. The plot features a private parking space, ensuring convenience and security. The combination of solar panels, high-quality insulation and smart design provides an energy-efficient home, ideal for permanent living, holiday use or as a rental investment. Excellent location near golf courses, beaches and airports Roldán town centre 2 km away Mar Menor beaches 15 km away Mediterranean beaches 20 km away La Torre Golf Resort 5 km away Terrazas de la Torre Golf 6 km away Murcia Corvera Airport 18 km away Cartagena 30 km away This strategic location offers easy access to golf courses, beaches, amenities and transport links, whilst enjoying a peaceful residential setting. A smart investment on the Costa Cálida These townhouses and semi-detached homes at El Alba Mediterranean Resort offer an excellent opportunity to purchase a modern property with a private pool in the rapidly growing area of Torre Pacheco. Contact us today for further information or to arrange a viewing of these exclusive new-build homes.

Floor plans



PLANTA BAJA

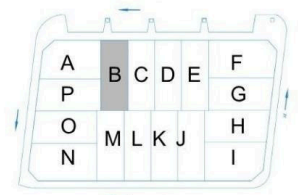


PLANTA DE CUBIERTA

Vivienda: N 3

SUPERFICIE VIVIENDA	
VIVIENDA	SUPERFICIE
TOT. CONSTRUIDA	82,98 m ²

SUPERFICIES EXTERIORES	
ESPACIO	SUPERFICIE
Jardín	45,11 m ²
Piscina	14,40 m ²
Solarium	83,61 m ²
Patio	10,10 m ²
Planchales	1,54,92 m ²



Additional information

Facilities

Aircondition, Provision

Gated complex

Parking, Uncovered

Pool, Private

Features

Barbeque

Garden

Golf course

Distances

Sea



15 km