

#10979

Modern Apartments with comunal Pool Near the Beach in San Pedro del Pinatar

📍 San Pedro del Pinatar, Murcia

€239,900





Overview

Specifications

Bedrooms

 2

Bathrooms

 2

Covered

 92 m²

Type

Bungalow

Plot

58 m²

Uncovered veranda

18 m²

Status

Key ready

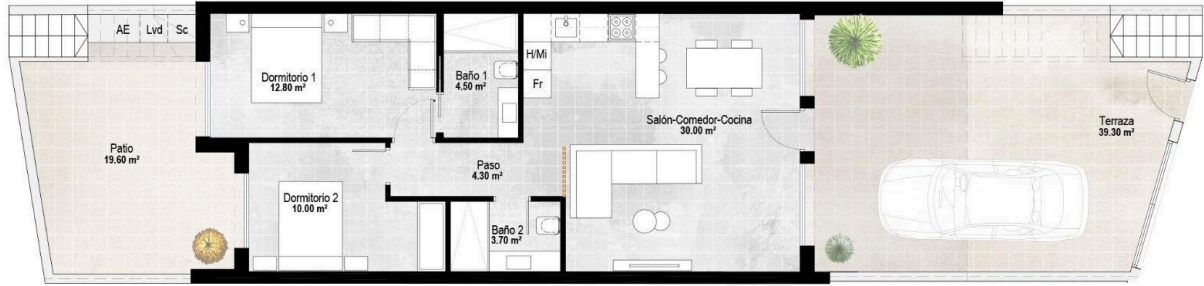
Energy efficiency rating

 **B**

Description

Modern Apartments with comunal Pool Near the Beach in San Pedro del Pinatar Exclusive New Build Apartments on the Costa Calida Discover this boutique development of 12 modern apartments designed to offer comfort, functionality and quality of life in one of the most attractive areas of the Costa Calida. Located close to Lo Pagan in San Pedro del Pinatar, this residential complex combines a residential environment with easy access to the coast and all essential services. The area is well known for its relaxed Mediterranean lifestyle, natural beaches and famous mud baths. With shops, restaurants, supermarkets and leisure facilities nearby, this location is ideal for both permanent living and holiday stays. Prime Location Close to Beaches and Promenade The development is situated just 3 km from the beaches of La Torre and the popular Lo Pagan promenade, where you can enjoy seaside walks, beach bars and water sports activities. The Mar Menor offers calm and warm waters, perfect for families and outdoor enthusiasts. Contemporary Design with Flexible Layouts The project offers 1 and 2 bedroom apartments in different configurations to suit various lifestyles. Ground floor properties feature large private terraces, parking within the plot and direct access to the communal pool. Top floor apartments include private rooftop solariums, ideal for enjoying the sun and outdoor living. All homes are designed with open plan living spaces, combining kitchen, dining and lounge areas with direct access to terraces. Bedrooms include built in wardrobes, and the master bedroom benefits from an en suite bathroom. High Quality Finishes and Energy Efficiency These apartments are built with a focus on comfort and sustainability. Features include pre installation for ducted air conditioning, pre installation for natural gas central heating and an aerothermal system for hot water. Bathrooms are fully equipped with furniture, mirrors and shower screens, while electric shutters are installed in the living room. Additional technical lighting and ventilation systems ensure a comfortable indoor environment throughout the year. Communal Areas Designed for Relaxation The residential complex offers a beautifully designed communal area with a swimming pool featuring a beach style entrance, perfect for relaxing and cooling off. A dedicated chill out zone with sun loungers and shaded areas creates a welcoming space to socialize and unwind. Additional facilities include outdoor parking with pre installation for electric vehicle charging and a communal bicycle storage area, promoting a sustainable and active lifestyle. Excellent Connectivity and Nearby Amenities This development is ideally located with easy access to key points of interest. Murcia International Airport is approximately 35 km away and Alicante Airport around 75 km. Several golf courses are within 10 to 15 km, and nearby marinas offer excellent nautical facilities. Ideal Investment or Holiday Home Opportunity These apartments offer an excellent opportunity to enjoy modern coastal living in a well connected and sought after area. Contact us today for more information or to arrange a viewing and secure your new apartment near the sea in San Pedro del Pinatar.

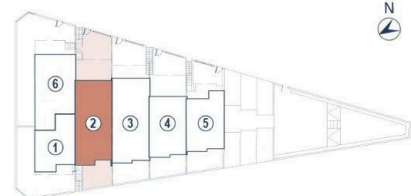
Floor plans



CUADRO DE SUP.

PLANTA	USO	SUP. ÚTIL	SUP. CONST.		
Baja	Vivienda	64.10 m ²	73.50 m ²	** Terraza	39.30 m ²
	Porche	18.70 m ²	18.70 m ²	** Patio	19.60 m ²
		82.80 m²	92.20 m²		

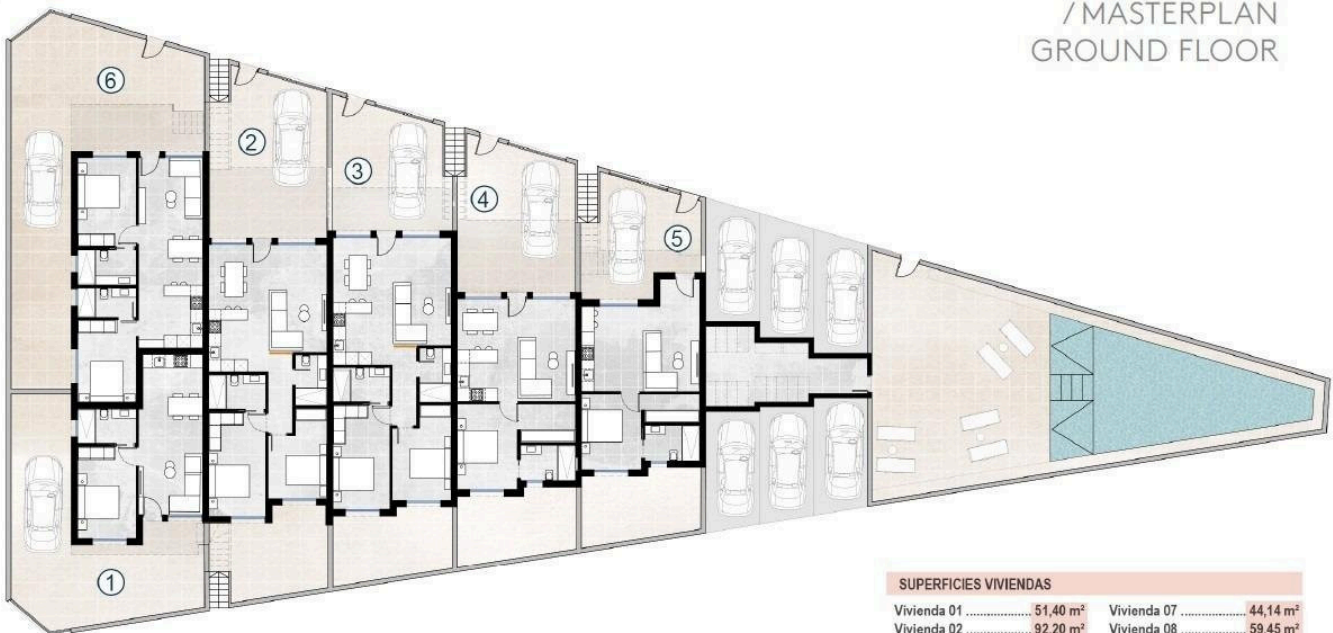
MASTERPLAN



*Este documento es orientativo. El promotor se reserva el derecho a introducir modificaciones por exigencias técnicas o legales.
This document is indicative. The promoter reserves the right to introduce modifications due to technical or legal requirements.

Los apartamentos / Apartments

MASTERPLAN
PLANTA BAJA
/ MASTERPLAN
GROUND FLOOR



SUPERFICIES VIVIENDAS

Vivienda 01	51.40 m ²	Vivienda 07	44.14 m ²
Vivienda 02	92.20 m ²	Vivienda 08	59.45 m ²
Vivienda 03	89.38 m ²	Vivienda 09	74.96 m ²
Vivienda 04	69.74 m ²	Vivienda 10	74.20 m ²
Vivienda 05	56.39 m ²	Vivienda 11	54.46 m ²
Vivienda 06	79.56 m ²	Vivienda 12	53.11 m ²

*Este documento es orientativo. El promotor se reserva el derecho a introducir modificaciones por exigencias técnicas o legales.
This document is indicative. The promoter reserves the right to introduce modifications due to technical or legal requirements.

Additional information

Facilities

Aircondition, Provision

Gated complex

Parking, Uncovered

Pool, Communal

Features

Garden

Near bus route

Veranda

Distances

Sea



3 km