

#10966

# Modern Semi Detached Villas with Private Pool in Las Filipinas-Orihuela Costa

📍 Las Filipinas, Orihuela Costa, Alicante

€559,000





# Overview

## Specifications

Bedrooms

 3

Bathrooms

 2

Covered

 140 m<sup>2</sup>

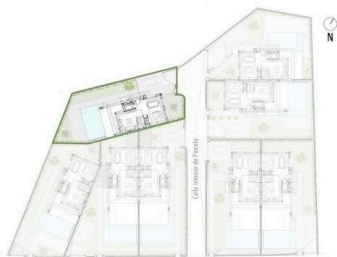
Type	<b>Villa</b>
Plot	<b>300 m<sup>2</sup></b>
Uncovered veranda	<b>36 m<sup>2</sup></b>

Status	<b>Key ready</b>
Energy efficiency rating	 <b>B</b>

## Description

Modern Semi Detached Villas with Private Pool in Las Filipinas-Orihuela Costa Exclusive New Build Villas in a Prime Costa Blanca Location Discover this boutique development of eight modern semi detached villas located in Las Filipinas, Orihuela Costa, one of the most sought after residential areas in the southern Costa Blanca. This well established neighborhood offers excellent access to everyday amenities including supermarkets, restaurants, pharmacies and leisure facilities, all within a short distance. Ideally positioned between some of the best golf courses in the area, including Villamartin Golf, Campoamor Golf, Las Ramblas Golf and Las Colinas Golf, these villas provide an exceptional lifestyle for golf lovers and international buyers. The beautiful beaches of Orihuela Costa are just 6 km away, making this an ideal location for both permanent living and holiday homes. Contemporary Design with Spacious Layouts Each villa is built on a private plot of approximately 300 m<sup>2</sup> and offers around 140 m<sup>2</sup> of modern living space distributed over two floors. The properties feature three double bedrooms, two full bathrooms with double sinks including an en suite, and an additional guest toilet. The ground floor showcases a bright and stylish living area with a feature wall finished in natural stone, creating a warm and elegant atmosphere. Large windows provide direct access to the outdoor terrace and private swimming pool, which includes decorative water features. At the rear of the property, a designer Italian kitchen with a central island and LED lighting opens to a spacious dining area with access to the garden and private parking area. Elegant Bedrooms and Outdoor Living The first floor includes two guest bedrooms with built in wardrobes and a family bathroom. The master bedroom stands out with a sophisticated design, featuring a floor to ceiling oak headboard, mirrored details and a luxurious en suite bathroom, as well as views over the pool area. There is also the option to add a rooftop solarium or a semi basement, offering additional space and customization potential. High Quality Features and Modern Comfort These villas are built with high quality materials and the latest technology to ensure comfort and efficiency. Features include pre installation for ducted air conditioning, aerothermal system for hot water, underfloor heating in bathrooms and electric shutters. Additional specifications include an alarm system, video intercom and automated vehicle access gate, ensuring both convenience and security. Prime Location Close to Beaches and Golf Las Filipinas offers a strategic location with excellent connectivity. The beaches of Orihuela Costa are approximately 6 km away, while Murcia International Airport is 50 km and Alicante Airport is 55 km. Several top golf courses are located within a radius of 2 to 5 km. Ideal Investment Opportunity on the Costa Blanca These modern villas offer a perfect combination of design, location and lifestyle, making them an excellent investment or second home on the Costa Blanca. Contact us today for more information or to arrange a viewing and secure your new villa in Orihuela Costa.

# Floor plans



SUPERFICIES ÚTILES			
PLANTA BAJA		PLANTA PRIMERA	
Salón	20,40 m <sup>2</sup>	Dormitorio 01	15,10 m <sup>2</sup>
Comedor - Cocina	25,30 m <sup>2</sup>	Dormitorio 02	10,40 m <sup>2</sup>
Aseo	3,25 m <sup>2</sup>	Dormitorio 03	10,40 m <sup>2</sup>
Vestibulo	3,00 m <sup>2</sup>	Baño 01	7,45 m <sup>2</sup>
		Baño 02	5,45 m <sup>2</sup>
		Distribuidor	3,80 m <sup>2</sup>

VIVIENDA 06	
SUPERFICIES CONSTRUIDAS	
Planta Baja	61,75 m <sup>2</sup>
Planta Primera	70,60 m <sup>2</sup>
Vuelos	13,80 m <sup>2</sup>
Terraza	23,30 m <sup>2</sup>
<b>SUPERFICIE TOTAL</b>	<b>169,45 m<sup>2</sup></b>
Lámina de agua	29,50 m <sup>2</sup>
<b>SUPERFICIE PARCELA TOTAL</b>	<b>300,00 m<sup>2</sup></b>



# Additional information

## Facilities

Aircondition, Provision

Gated complex

Pool, Private

## Features

Garden

Golf course

Near bus route

## Distances

Sea



**6 km**